

11 044 Pressure Regulator

Water and Compressed Air Service

1/4" Tube connection

Non-relieving models.

Acetal plastic, corrosion resistant construction

Low torque, non-rising adjusting knob.

Designed for use with deionized water and potable water systems. Plastic (not assembly) is NSF approved. All elastomers are CFR 21 FDA food and water contact compliant. Non-relieving models only.

Technical data

Fluid:

Water and compressed air, neutral gases

NOTE: Contact Norgren for use with other media.

Maximum pressure:

250 psig (17 bar)

Operating temperature:

Water service: 35° to 150°F (2° to 66°C)

Air service: -30° to 150°F (-34° to 66°C) *

*When used in air service, air supply must be dry enough to avoid ice formation at temperatures below 35°F (2°C).

Port connections:

1/4" OD tube (brass nut and plastic ferrule supplied)

Recommended tubing: 1/4" soft PVC or Polyethylene tubing. Avoid aluminum, copper, and hard plastic tubing.

Typical flow:

Compressed air service at 100 psig (7 bar) inlet pressure, 90 psig (6.3 bar) set pressure and a droop of 15 psig (1 bar) from set: 3.0 scfm (1.4 dm³/s)

Water service at 100 psig (7 bar) inlet pressure, 60 psig (4 bar) set pressure and a droop of 15 psig (1 bar) from set: 0.7 U.S. gpm (2.65 liters per minute)

No gauge ports

Materials

Body: Acetal

Bonnet: Acetal

Valve: Stainless steel with EPDM seal (CFR21 FDA food and water contact compliant)

Valve seat: Acetal

Diaphragm: Stainless steel and nitrile (CFR21 FDA food and water contact compliant)



Ordering Information

Model listed has non-relieving diaphragm, and 5 to 100 psig (0.3 to 7 bar) outlet pressure adjustment range.†

Port Connection	Model	Flow* scfm (dm ³ /s)	Flow** U.S. gpm (lpm)	Weight lb (kg)
1/4" tube nut and ferrule	11 044 003	3.0 (1.4)	0.7 (2.65)	0.16 (0.08)

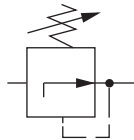
For additional models contact the factory.

* Approximate flow with 100 psig (7 bar) inlet pressure, 90 psig (6.3 bar) set pressure and a 15 psig (1 bar) droop from set.

** Approximate flow with 100 psig (7 bar) inlet pressure, 60 psig (4 bar) set pressure and a 15 psig (1 bar) droop from set.

† Outlet pressure can be adjusted to pressures in excess, and less than, those specified. Do not use these units to control pressures outside of the specified ranges.

ISO Symbols



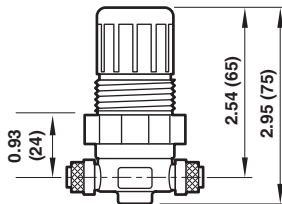
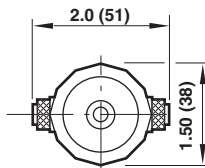
Non relieving

11 044 Pressure Regulator

Water and Compressed Air Service

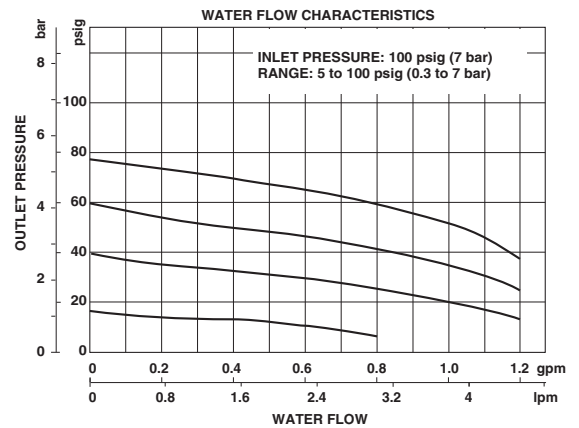
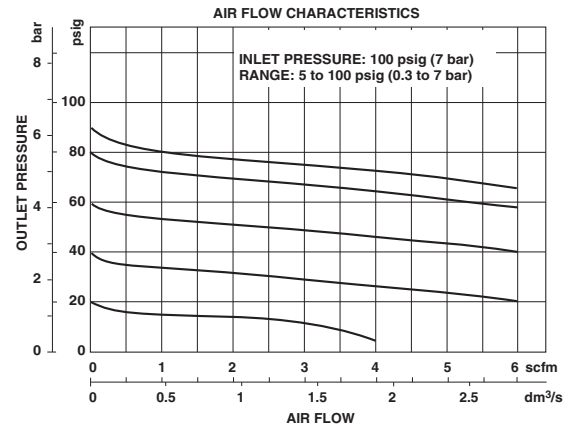
1/4" Tube connection

Panel mounting hole diameter: 1.19" (30 mm)
Maximum panel thickness: 0.25" (6 mm)



Dimensions in inches (mm)

Typical Performance Characteristics



Service Kits

Type	Part number
Non-relieving	3407-59

Service kit includes slip ring, valve seat, valve, valve spring, and diaphragm.