

**Excelon 73C Oil Removal Filter
(Coalescing) 1/4", 3/8", and 1/2" Port Sizes**

- Excelon design allows in-line or modular installation
- Quick release bayonet bowl
- Highly visible, prismatic liquid level indicator lens
- Standard mechanical service indicator turns from green to red when the filter element needs to be replaced
- Optional electrical service indicator provides electrical output when the filter element needs to be replaced
- Modular installations with Excelon 72, 73, and 74 series can be made to suit particular applications

Install an F73G pre-filter with a 5 µm filter element upstream of the F73C filter for optimum coalescing element life.



Ordering Information. Models listed include PTF threads, service indicator, automatic drain, and a metal bowl with liquid level indicator.

Port Size	Model	Flow† scfm (dm³/s)	Weight lb (kg)
1/4"	F73C-2AD-AD0	21.2 (10.0)	1.2 (0.54)
3/8"	F73C-3AD-AD0	21.2 (10.0)	1.2 (0.54)
1/2"	F73C-4AD-AD0	21.2 (10.0)	1.2 (0.54)

† Maximum flow with 90 psig (6.3 bar) inlet pressure to maintain stated oil removal performance.

Alternative Models

F 7 3 C - ★ ★ ★ - ★ ★ ★

Port Size	Substitute
1/4"	2
3/8"	3
1/2"	4

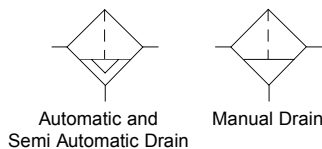
Threads	Substitute
PTF	A
ISO Rc taper	B
ISO G parallel	G

Service Indicator	Substitute
With electrical service indicator	E
With mechanical service indicator	D
Without	N

Element	Substitute
Coalescing	0

Bowl	Substitute
Metal with liquid level indicator	D
Transparent with guard	P
Transparent	T

Drain	Substitute
Automatic	A
Manual, 1/4 turn	Q

ISO Symbols


See Section ALE-24 for Accessories



Technical Data

Fluid: Compressed air

Maximum pressure

Transparent bowl: 150 psig (10 bar)

Metal bowl: 250 psig (17 bar)

Operating temperature*

Transparent bowl: -30° to 125°F (-34° to 50°C)

Metal bowl: -30° to 150°F (-34° to 65°C)

* Air supply must be dry enough to avoid ice formation at temperatures below 35°F (2°C).

Particle removal: Down to 0.01 µm

Air quality: Within ISO 8573-1, Class 1 (particulates) and Class 2 (oil content)

Maximum remaining oil content in outlet air: 0.01 ppm at 70°F (20°C) with an inlet concentration of 17 ppm

Maximum flow at 90 psig (6.3 bar) inlet pressure to maintain stated oil removal performance: 21.2 scfm (10 dm³/s)

Manual drain connection: Will fit 1/8-27 and 1/8-28 pipe thread.

Automatic drain connection: Will fit 1/8-27 and 1/8-28 pipe thread. - Flexible tube with 3/16" (5mm) minimum I.D. can be connected to the automatic drain. Drain may fail to operate if the tube I.D. is less than 3/16" (5mm). Avoid restrictions in the tube.

Automatic drain operating conditions (float operated)

Bowl pressure required to close drain: Greater than 5 psig (0.3 bar)

Bowl pressure required to open drain: Less than 3 psig (0.2 bar)

Minimum air flow required to close drain: 0.2 scfm (0.1 dm³/s)

Manual operation: Depress pin inside drain outlet to drain bowl

Nominal bowl size: 3.5 fluid ounce (0.1 liter)

Filter materials

Body: Aluminum

Bowl

Transparent: Polycarbonate

Transparent with guard: Polycarbonate, steel guard

Metal: Aluminum

Metal bowl liquid level indicator lens: Transparent nylon

Element: Synthetic fiber and polyurethane foam

Elastomers: Neoprene and nitrile

Mechanical service indicator materials

Body: Transparent nylon

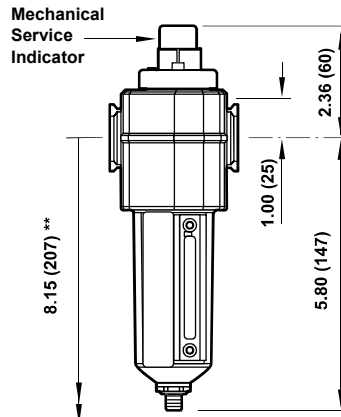
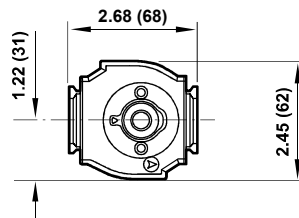
Internal parts: Acetal

Spring: Stainless steel

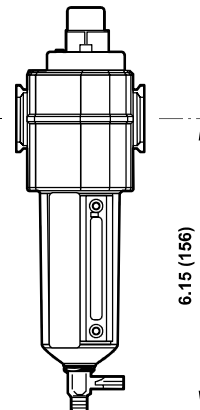
Elastomers: Nitrile

An automatic drain is a two-way valve, which will close when the system is pressurized. The drain opens when the float rises due to accumulated liquid and on depressurization.

All Dimensions in Inches (mm)



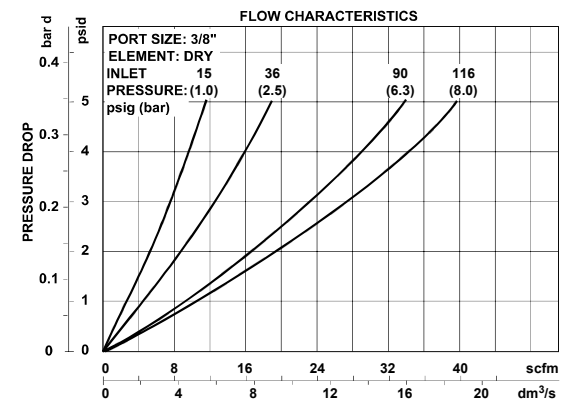
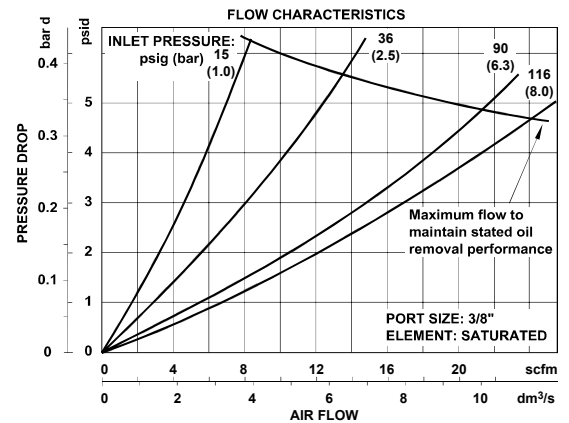
Automatic Drain



1/4 Turn Manual Drain

** Minimum clearance required to remove bowl.

Typical Performance Characteristics



Service Kits

Item	Type	Part Number
Service kit	Seal & Gasket	4380-602
Replacement elements	Coalescing	4444-01
Liquid level lens kit	Prismatic	4380-020
Replacement drains	Automatic	4000-51R
	Manual quarter turn	619-50

Service kit includes element o-ring, automatic drain seal and bowl o-ring.