

Excelon® Quikclamp system LV72G Pressure relief valves 1/4" & 3/8"

Excelon design allows in-line installation or modular installation with other Excelon products

Push to lock adjusting knob with tamper resistant accessory

Helps protect air operated equipment from over pressurisation

Norgren pressure relief valves comply with category 0 (S.E.P.) and category 1 of the Pressure Equipment Directive 97/23/EC.

Wide temperature range

Shock and vibration tested to EN 61373, Category 1, class A and B



Technical features

Medium:

Compressed air

Relief pressure range:

0,3 ... 10 bar (5 ... 145 psi)

Other relief pressures are available, contact Norgren

Relief port:

1/4"

Gauge ports:

Rc 1/8 for ISO G main ports,
1/8 PTF for PTF main ports

Ambient temperature:

-40 ... +65°C (-40 ... +150°F)

Air supply must be dry enough to avoid ice formation at

temperatures below +2°C (+35°F).

Materials:

Body: zinc body

Bonnet: acetal

Elastomers: nitrile

Bottom plug: acetal

Technical data

| Air port | Weight | | Model with ISO G-thread | Model with PTF-thread |
|----------|--------|------|-------------------------|-----------------------|
| | kg | lb | | |
| 1/4" | 0,33 | 0,72 | LV72G-2GK-NMN | LV72G-2AK-NMN |
| 3/8" | 0,33 | 0,72 | LV72G-3GK-NMN | LV72G-3AK-NMN |

Option selector

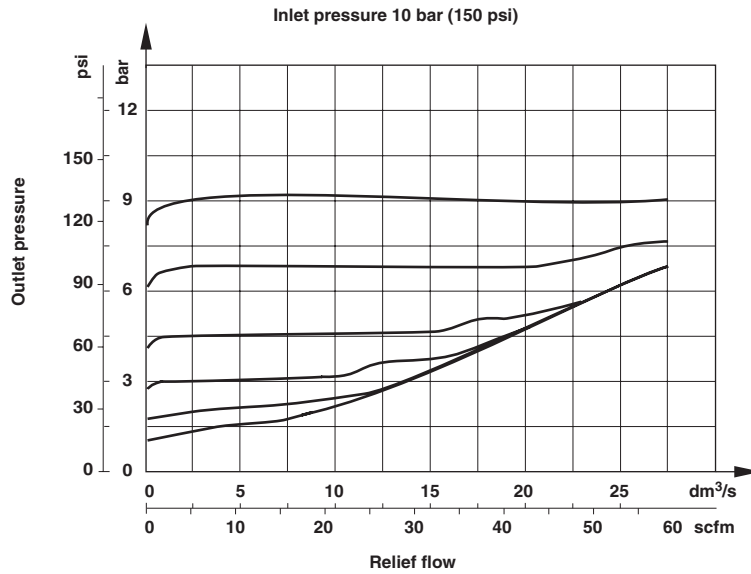
| Port size | Substitute |
|-----------|------------|
| 1/4" | 2 |
| 3/8" | 3 |

LV72G-***-NMN

| Adjustment | Substitute |
|----------------------------|------------|
| Knob (standard) | K |
| T-handle (10 bar, 145 psi) | T |
| Threads form | Substitute |
| PTF | A |
| ISO G parallel | G |

Flow characteristics

LV72G – Port size 1/4",
regulating range
0,3 ... 10 bar (5 ... 145 psi)



Accessories

72 series



| Series | Quikclamp with wall bracket* | Quikclamp* | Tamper resistant cover & seal wire | Wall bracket and panel mounting nut | Panel nut (zinc) | Silencer | Service kit |
|--------|------------------------------|------------|------------------------------------|-------------------------------------|------------------|----------------------------------|-------------|
| 72 | 4214-58 | 4214-57 | 4255-51 | 74316-50 | 4268-89 | MB002B (Rc 1/4) MB002A (1/4 NPT) | NA |

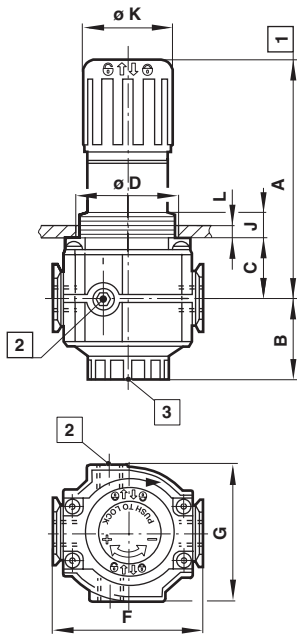
* Please use a Quikmount pipe adaptor if the Quikclamp is mounted at inlet or outlet side.

| Series | Quikmount pipe adaptor ISO G parallel thread | | PTF-thread | |
|--------|--|---------|------------|---------|
| | Port size | 2 | Port size | 2 |
| 72 | 1/4" | 4215-08 | PTF-thread | 4215-02 |
| 72 | 3/8" | 4215-09 | PTF-thread | 4215-03 |

| Series | Port size | Gauge (for full technical specification see page 4-61) | | Diameter | Model |
|----------------------|-----------|--|-----------------------|----------|------------|
| | | Pressure range in bar | Pressure range in psi | | |
| 72 (ISO G main port) | Rc 1/8 | 0 ... 10 | 0 ... 160 | 40 mm | 18-013-989 |
| 72 (PTF main port) | 1/8 PTF | 0 ... 10 | 0 ... 160 | 1 1/2" | 18-013-212 |

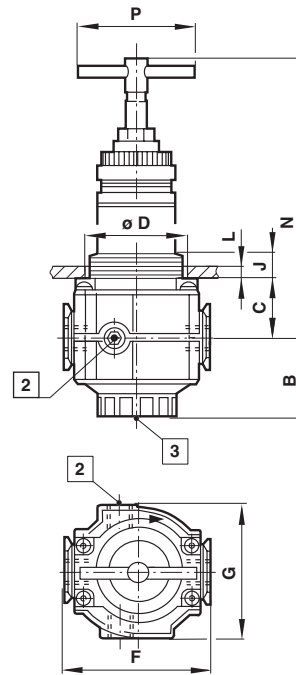
Basic dimensions

Standard



T-handle

Dimensions shown in mm
Projection/First angle



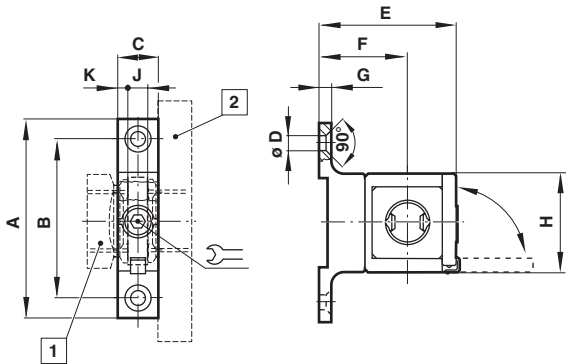
| Series | A | B | C | F | G | ØD | J | ØK | L | N | P |
|--------|----|----|----|----|----|----|----|----|-------|-----|----|
| 72 | 73 | 33 | 26 | 50 | 48 | 40 | 12 | 35 | 0...4 | 102 | 63 |

1 Reduces by 4 mm with knob in locked position

2 Gauge port

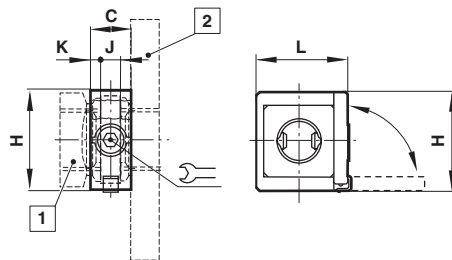
3 Exhaust port Rc 1/4, 1/4 PTF for LV72G only

Quikclamp® with wall bracket



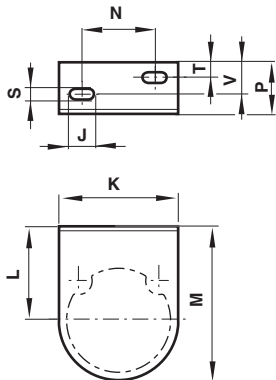
| Series | A | B | C | ØD | E | F | G | H | J | K | |
|--------|----|----|------|-----|----|----|-----|------|-----|---|---|
| 72 | 74 | 59 | 14,5 | 5,3 | 56 | 38 | 4,5 | 36,5 | 6,5 | 4 | 3 |

Quikclamp®



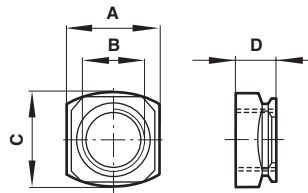
| Series | C | H | J | K | L | |
|--------|------|------|-----|---|------|---|
| 72 | 14,5 | 36,5 | 6,5 | 4 | 36,5 | 3 |

Neck mounting bracket



| Series | J | K | L | M | N | P | R | S | T | V |
|--------|---|----|----|------|----|----|---|-----|---|----|
| 72 | 8 | 49 | 38 | 63,5 | 30 | 24 | - | 4,4 | 7 | 10 |

Quikmount pipe adaptor



| Series | A | B | C | D |
|--------|----|----------|----|----|
| 72 | 29 | 1/4, 3/8 | 29 | 16 |

Warning

These products are intended for use in industrial compressed air and rail transport systems only. Do not use these products where pressures and temperatures can exceed those listed under 'Technical features'. Before using these products with fluids other than those specified, for non-industrial applications, life-support systems, or other applications not within published specifications, consult NORGREN.

Through misuse, age, or malfunction, components used in fluid power systems can fail in various modes.

The system designer is warned to consider the failure modes of all component parts used in fluid power systems and to provide adequate safeguards to prevent personal injury or damage to equipment in the event of such failure. System designers must provide a warning to end users in the system instructional manual if protection against a failure mode cannot be adequately provided. System designers and end users are cautioned to review specific warnings found in instruction sheets packed and shipped with these products.