

STAINLESS STEEL GENERAL PURPOSE

Regulators and filter/regulator

R05, B05 – 1/4" PTF

Metallic parts meet NACE* recommendations

Miniature high corrosion resistant design

Adjusting knob has snap-action lock

Particularly suitable for marine, petro-chemical, food processing, medical, dental and similar applications

Panel mounting facility

* National Association of Corrosion Engineers - recognised oil-field recommendation for resistance to sulphide stress cracking common in well-head and other corrosive environments.



TECHNICAL DATA

Medium:

Compressed air only

Maximum inlet pressure:

300 psig (20 bar)

Gauge ports:

1/8" PTF

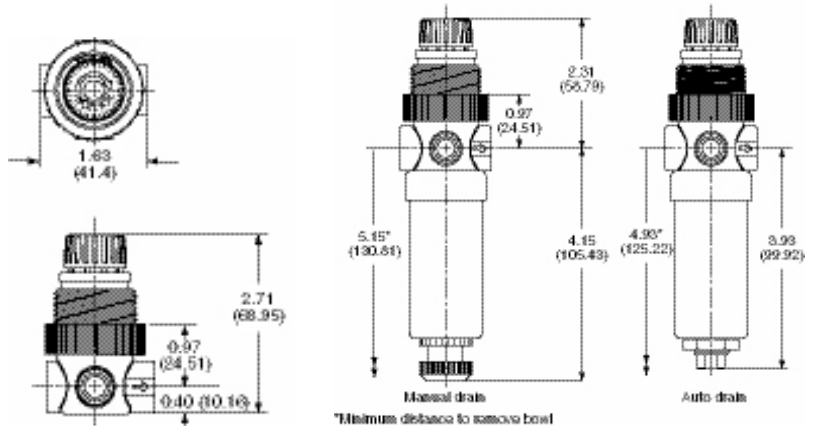
Ambient temperature:

-30°F to 150°F [-34°C to +66°C]*

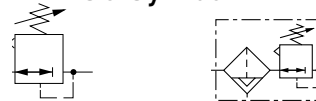
*Consult our Technical Service for use below 35°F (+2°C)

B05 Particle removal:

5 µm



ISO Symbol



Models

B05 SERIES AUTO DRAIN Model No.	MANUAL DRAIN Model No.	Port size PTF	Flow SCFM* (dm³/s)
---------------------------------------	---------------------------	---------------------	--------------------------

Accessories

Gauge** 0 to 150 psig	Wall mounting bracket	Mounting nut	Replacement 5 µm filter element	Service kitt
-----------------------------	-----------------------------	-----------------	---------------------------------------	-----------------



B05-233-A1LA	B05-233-M1LA	1/4"	15 (7)	18-013-844	18-025-003	2962-89	5726-04	3820-08
--------------	--------------	------	--------	------------	------------	---------	---------	---------

† Kit includes: Diaphragm, seals, O-rings, valve

R05 SERIES Model No.	Outlet pressure adj. range psig (bar) PTF	Port size (dm³/s)	Flow SCFM* (dm³/s)
-------------------------	---	-------------------------	--------------------------

Gauge** 0 to 150 psig	Wall mounting bracket	Mounting nut	Service kitt
-----------------------------	-----------------------------	-----------------	-----------------



R05-200-RNEA	5 to 50 psig (0.3 to 3.5)	1/4"	15 (7)	18-013-844	18-025-003	2962-89	3407-71
R05-200-RNLA	5 to 125 psig (0.3 to 8.5)	1/4"	15 (7)	18-013-844	18-025-003	2962-89	3407-71

† Kit includes: Slip ring, diaphragm, valve seat with seal, valve, valve spring

* Typical flow with 10 bar inlet pressure, 6,3 pressure and 1 bar drop from set

** Not NACE standard

