

- Push-in fittings in ports. No need for threaded connectors and fittings
- Push to lock adjusting knob with tamper resistant accessory
- Integral base mounting
- Water or compressed air only



**Ordering Information.** Models listed include 10 mm push-in fittings, knob adjustment, relieving diaphragm, 0 to 70 psig (0 to 4.8 bar) outlet pressure adjustment range\* with gauge, with porting plug.

Port	Model	Flow <sup>†</sup> scfm (dm <sup>3</sup> /s)	Weight lb (kg)
8 mm	R30M-8DK-RGG	17 (8)	0.22 (0.10)
10 mm	R30M-ADK-RGG	17 (8)	0.22 (0.10)

<sup>†</sup> Typical flow with 150 psig (10 bar) inlet pressure, 90 psig (6.3 bar) set pressure and a 15 psig (1 bar) droop from set.

### Alternative Models

R 3 0 M - ★ D K - ★ ★ ★

Port Size	Substitute
8 mm	8
10 mm	A

Push-In Form	Substitute
Metric	D

Adjustment	Substitute
Knob	K

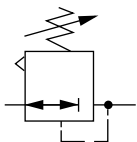
Gauge	Substitute
With	G
Without	N

Outlet Pressure Adjustment Ranges*	Substitute
0 to 70 psig (0 to 4.8 bar)	G
5 to 100 psig (0.3 to 7 bar)	K

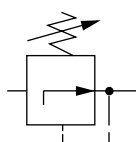
Type	Substitute
Relieving	R
Non relieving	N

\* Outlet pressure can be adjusted to pressures in excess of, and less than, those specified. Do not use these units to control pressures outside of the specified ranges.

### ISO Symbols



Relieving



Non relieving

See Section ALE-24 for Accessories



**Technical Data**

Fluid: Compressed air or water  
 Maximum pressure: 150 psig (10 bar)  
 Operating temperature\*: 23° to 104°F (-5° to 40°C)  
 \* Air supply must be dry enough to avoid ice formation at temperatures below 35°F (2°C).  
 Approximate flow at 150 psig (10 bar) inlet pressure, 90 psig (6.3 bar) set pressure and a droop of 15 psig (1 bar) from set: 17 scfm (8 dm<sup>3</sup>/s)

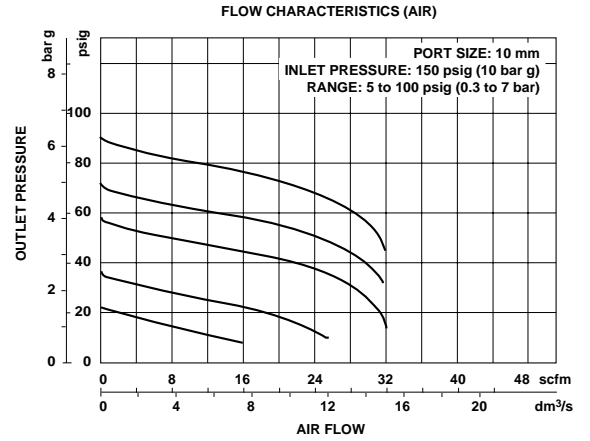
Gauge port:  
 (can be used as additional outlet port)  
 10 mm OD tube with 10 mm OD tube main ports  
 8 mm OD tube with 8 mm OD tube main ports

Two inlet ports:  
 10 mm OD tube or 8 mm o/d tube

One outlet port:  
 10 mm OD tube with 10 mm OD tube inlet  
 8 mm OD tube with 8 mm OD tube inlet

Materials:  
 Body: Acetal  
 Bonnet: Acetal  
 Valve: Brass/nitrile  
 Elastomers: Nitrile  
 Valve seat: Acetal

**Typical Performance Characteristics**



All Dimensions in Inches (mm)  
 Panel mounting hole diameter: 1.19" (30 mm)  
 Maximum panel thickness: 0.25" (6 mm)

**Typical Manifold Regulator Application**

