

R38 Instrument Regulator and B38 Filter/Regulator

Aluminum Model 1/4" Port Size

Compact instrument units with high performance

Stable regulation with temperature compensation

Excellent flow and regulation characteristics

Panel Mounting facility

Technical data

Fluid:

Compressed air, neutral gases

NOTE: Contact Norgren for use with other media.

Maximum pressure:

290 psig (20 bar)

Operating temperature:

-40° to 175°F (-40° to 80°C) *

* Air supply must be dry enough to avoid ice formation at temperatures below 35°F (2°C).

Typical relief differential at 30 psig (2 bar) outlet pressure:

2.3 psig (0.16 bar)

Maximum bleed flow at 30 psig (2 bar) outlet pressure (relieving types only):

0.003 scfm (1.5 cm³/s)†

† Maximum bleed rate occurs under dead-end (no flow) conditions.

Gauge ports:

1/4 NPT

Materials

Body: Aluminum

Bonnet: Aluminum

Adjusting screw: Steel

Elastomeric materials: Nitrile



B38

R38

Ordering Information

Models listed are relieving type with 0.6 to 30 psig (0.04 to 2 bar) outlet pressure adjustment range *, and PTF threads. A gauge is not included.

Port Size	Model Number	Flow† scfm (dm ³ /s)	Weight lbs (kg)
1/4" PTF	R38-200-RNCA	17 (8)	1.06 (0.48)
1/4" PTF	B38-200-B2CA	17 (8)	1.18 (0.54)

* Outlet pressure can be adjusted to pressures in excess of, and less than, those specified. Do not use these units to control pressures outside of the specified ranges.

† Typical flow with 100 psig (7 bar) inlet pressure, 15 psig (1 bar) set pressure and 1 psig (0.05 bar) droop from set.

Service Kits

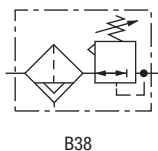
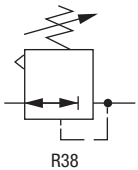
R38 Item	Type	Part number
30 psig (2 bar) Range	Relieving	R38-100-R
	Non relieving	R38-100-NR
60, 100 psig (4 bar, 7 bar) Range	Relieving	R38-101-R
	Non relieving	R38-101-NR

Service kit includes diaphragm assembly, o-ring, valve, valve spring and 8 pan head screws.

B38 Filter Elements

B38-100A (5)	5 µm
B38-100A (25)	25 µm

ISO Symbols

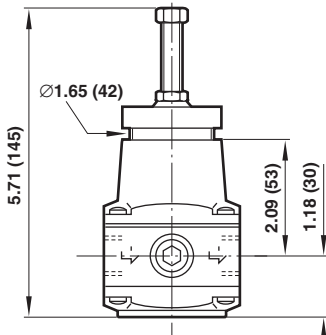
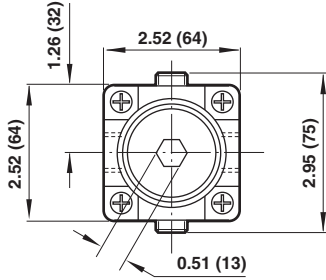


All Dimensions in Inches (mm)

R38 Instrument Regulator

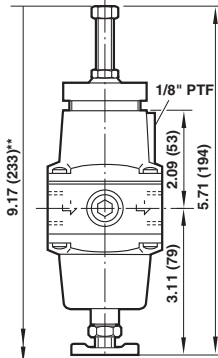
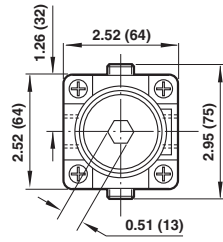
Aluminum Model 1/4" Port Size

R38



Panel mounting hole diameter: 1.65" (42 mm)
Panel thickness: 0" to 0.24" (0 to 6 mm)

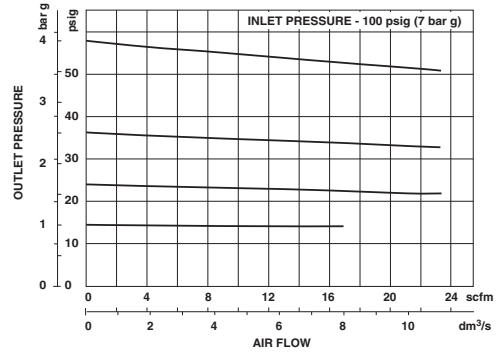
B38



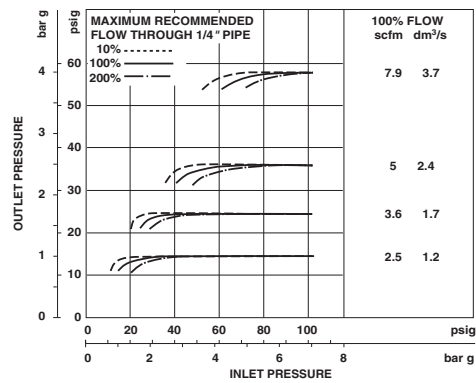
** Minimum clearance required to remove bowl.
Panel mounting hole diameter: 1.65" (42 mm)
Maximum panel thickness: 0.24" (6 mm)

Typical Performance Characteristics

R38 FLOW CHARACTERISTICS - PORT SIZE: 1/4"

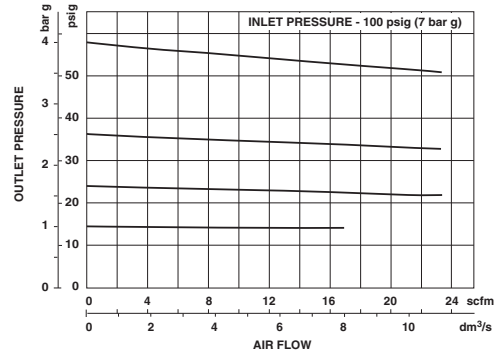


REGULATION CHARACTERISTICS - PORT SIZE: 1/4"

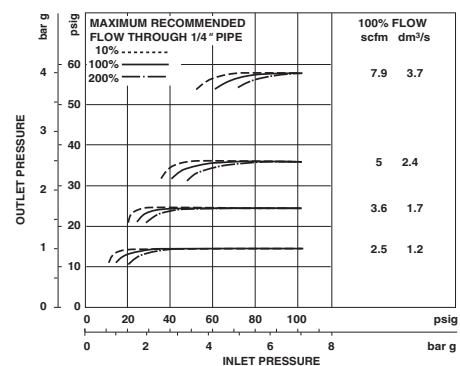


B38

FLOW CHARACTERISTICS - PORT SIZE: 1/4"



REGULATION CHARACTERISTICS - PORT SIZE: 1/4"



AIR LINE EQUIPMENT