

# Excelon® R72M and R74M Manifold Regulator

## 1/4", 3/8", 1/2" and 3/4" port sizes

Excelon® design allows in-line or modular installation  
 Manifold typically up to six regulators without booster signal  
 RoHS compliant  
**Technical data**

Fluid:  
 Compressed air, neutral gases  
**NOTE:** Contact Norgren for use with other media.

**R72M**  
 Maximum pressure:  
 300 psig (20 bar)  
 Operating temperature\*:  
 -30° to 150°F (-34° to 65°C)

\* Air supply must be dry enough to avoid ice formation at temperatures below 35°F (2°C).

**Ports:**  
 Inlet ports (2):  
 1/4" or 3/8" PTF or ISO G  
 Outlet port (1):  
 1/4" PTF with PTF inlet ports, or  
 1/4" ISO Rc with ISO G inlet ports  
 Gauge port (1):  
 1/8" PTF with PTF inlet ports  
 1/8" ISO Rc with ISO G inlet ports

**Materials**  
 Body: Zinc  
 Bonnet: Acetal  
 (Zinc on 250 psi (17 bar) T-handle version)  
 Elastomers: Nitrile  
 Bottom plug: Acetal

**R74M**  
 Maximum pressure:  
 300 psig (20 bar)  
 Operating temperature\*:  
 R74M: -30° to 175°F (-34° to 80°C)

\* Air supply must be dry enough to avoid ice formation at temperatures below 35°F (2°C).

**Ports**  
 Inlet ports (2):  
 1/2" or 3/4" PTF or ISO G  
 Outlet port (1):  
 1/2" PTF with PTF inlet ports, or  
 1/2" ISO Rc with ISO G inlet ports  
 Gauge port (1):  
 1/8" PTF with PTF inlet ports  
 1/8" ISO Rc with ISO G inlet ports

**Materials**  
 Body: Aluminum  
 Bonnet: Aluminum  
 Elastomers: Nitrile  
 Bottom plug: Acetal



### Ordering Information.

Models listed include PTF threads, knob adjustment, relieving diaphragm, 5 to 150 psig (0.3 to 10 bar) outlet pressure adjustment range\* with gauge.

Inlet Port (2)	Outlet Port (1)	Model	Flow† scfm (dm3/s)	Weight lb (kg)
1/4"	1/4"	R72M 2AK RMG	83 (39)	0.79 (0.36)
3/8"	1/4"	R72M 3AK RMG	83 (39)	0.79 (0.36)
1/2"	1/2"	R74M 4AK RMG	220 (105)	1.77 (0.8)
3/4"	1/2"	R74M 6AK RMG	220 (105)	1.73 (0.78)

† Typical flow with 150 psig (10 bar) inlet pressure, 90 psig (6.3 bar) set pressure and a 15 psig (1 bar) droop from set.

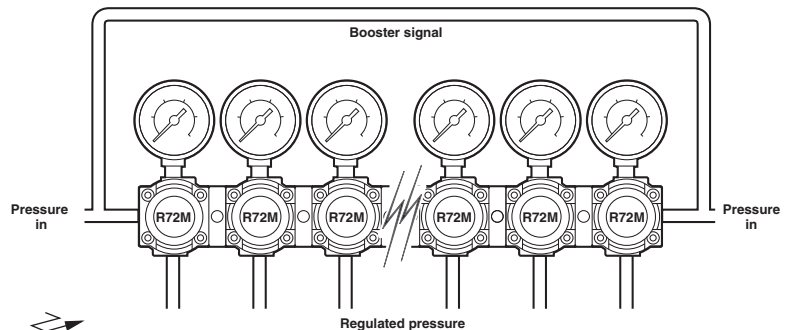
### Alternative Models

Series	Substitute	Gauge	Substitute
72	2	With	G
74	4	Without	N
Inlet Port Size	Substitute	Outlet Pressure Adjustment Range*	Substitute
1/4"	2	5 to 30 psig (0.3 to 2 bar) (R72M)	C
3/8"	3	5 to 60 psig (0.3 to 4 bar)	F
1/2"	4	5 to 150 psig (0.3 to 10 bar)	M
3/4"	6	10 to 250 psig (0.7 to 17 bar)**	S
Threads	Substitute	Diaphragm	Substitute
PTF	A	Relieving	R
ISO Rc taper	B	Non relieving	N
ISO G parallel	G	Adjustment	Substitute
		Knob	K
		T-bar	T

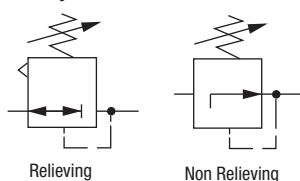
\* Outlet pressure can be adjusted to pressures in excess of, and less than, those specified. Do not use these units to control pressures outside of the specified ranges.

\*\* Units with 250 psig (17 bar) outlet pressure range are available only with the T-bar adjustment. Substitute "T" in the 7th position and "S" in the 9th position.

### Typical Manifold Regulator Application (R72M shown)



### ISO Symbols



Dimensions in inches (mm)

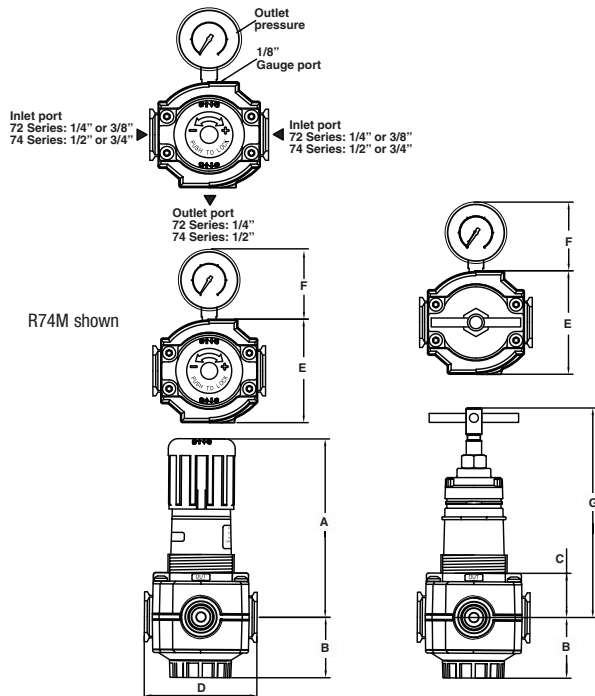
## R72M and R74M Manifold Regulators

1/4", 3/8", 1/2", and 3/4"

### Accessories

	Wall mounting bracket*	Neck mounting bracket	Gauge 0 ... 160 psig	Panel nut	Tamper resistant cover and seal wire	Pipe adapters (quantity of 1) (NPT)	Quikclamp®	Quikclamp® and wall bracket	Service kit
R72G	4224-50	74316-50	18-013-212	4248-89	4255-51	4215-02 (1/4) 4215-03 (3/8)	4214-51	4214-52	4381-500
R74G	4324-50	4368-51	18-013-209	4348-89	4355-51	4315-02 (3/8) 4315-03 (1/2) 4315-04 (3/4)	4314-51	4314-52	4381-700

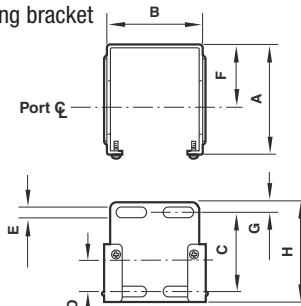
\* Bracket kit does not include wall mounting screws.



Series	A	B	C	D	E	F	G	Panel Ø	Panel depth
72	2.88 (73.3)	1.31 (33.2)	1.01 (25.7)	1.98 (50.2)	1.91 (48.4)	1.90 (48.3)	4.03/4.25** (102.2/108)	1.57 (39)	0 to .16 (0 to 4)
74	4.98 (126.6)	1.69 (43.0)	1.24 (31.4)	3.1 (80.0)	2.89 (73.5)	2.72 (69.0)	5.86 (148.8)	2.05 (52)	.07 to .25 (1.8 to 6)

\*\* 72 Series 250 psi version with Zinc bonnet and T-handle.

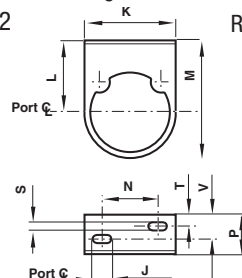
### Mounting bracket



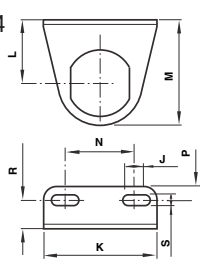
Series	A	B	C	D	E	F	G	H
72	2.36 (60)	1.65 (42)	1.54 (39)	0.73 (19)	0.16 (4)	1.50 (38)	0.24 (6)	2.01 (51)
74	3.11 (79)	2.72 (69)	1.97 (50)	0.79 (20)	0.20 (5)	2.01 (51)	0.24 (6)	2.40 (61)

### Neck mounting brackets

R72



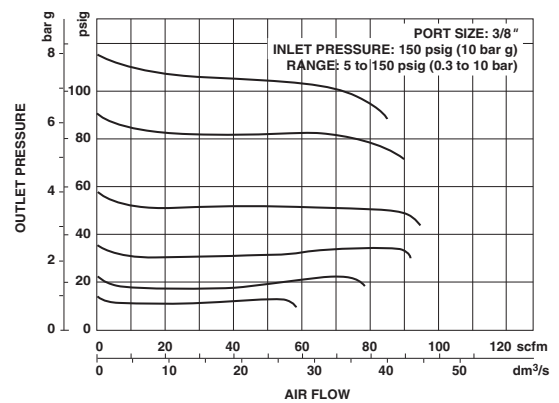
R74



Series	J	K	L	M	N	P	R	S	T	V
72	0.31 (8)	1.93 (49)	1.50 (38)	2.50 (64)	1.18 (30)	0.94 (24)	-	0.17 (4)	0.31 (8)	0.59 (15)
74	0.94 (24)	3.50 (89)	2.05 (52)	3.39 (86)	2.20 (56)	1.38 (35)	0.91 (23)	0.28 (7)	-	-

### Typical Performance Characteristics

R72M FLOW CHARACTERISTICS



R74 FLOW CHARACTERISTICS

